

# A NEW *MYCETOPHAGUS* FABRICIUS, 1792 SPECIES FROM NEPAL (COLEOPTERA: MYCETOPHAGIDAE)

Jiří Háva

Háva J. 2019. A new *Mycetophagus* Fabricius, 1792 species from Nepal (Coleoptera: Mycetophagidae). *Acta Biol. Univ. Daugavp.*, 19 (1): 87 – 90.

The species *Mycetophagus* (*Paramycetophagus*) *nepalensis* sp. nov. is described, illustrated and compared with species belonging to the subgenus *Paramycetophagus* Nikitsky, 2007. The species *Mycetophagus* (*Mycetophagoides*) *alni* Champion, 1917 is newly recorded from Nepal.

Key words: taxonomy, description, new species, new records, Coleoptera, Mycetophagidae, *Mycetophagus*, Nepal.

Jiří HÁVA. *Daugavpils University, Institute of Life Sciences and Technology, Department of Biosystematics. Vienības Str. 13, Daugavpils, LV - 5401, Latvia.*  
*Private Entomological Laboratory and Collection, Rýznerova 37, CZ - 252 62 Únětice u Prahy, Praha-západ, Czech Republic, E:mail: jh.dermestidae@volny.cz*

## INTRODUCTION

The genus *Mycetophagus* Fabricius, 1792 is divided into 11 subgenera and contains 36 species from the Palearctic Region (Nikitsky 2008, Saitô 2013). Only two species have still been known from the Himalayas (India: Uttarpradesh (Champion 1917, Nikitsky 2008). During the determination of some Mycetophagidae material deposited in Naturkundemuseum, Erfurt, Germany, I found a new *Mycetophagus* Fabricius, 1792 species from Nepal described below. One species is newly recorded from Nepal.

## MATERIAL AND METHODS

The size of the beetles or of their body parts can be useful in species recognition and thus, the following measurements were made:  
total length (TL) - linear distance from anterior margin of head to apex of elytra.

elytral width (EW) - maximum linear transverse distance.

Material deposited in the following collections:  
NMED Naturkundemuseum, Erfurt, Germany.  
JHAC Jiří Háva, Private Entomological Laboratory & Collection, Únětice u Prahy, Prague-West, Czech Republic.

Specimens of the presently described species are provided with red, printed labels with text as follows: „HOLOTYPE (or PARATYPE, respectively) *Mycetophagus* (*Paramycetophagus*) *nepalensis* sp. nov. Jiří Háva det. 2019”.

## RESULTS

*Mycetophagus* (*Mycetophagoides*) *alni* Champion, 1917

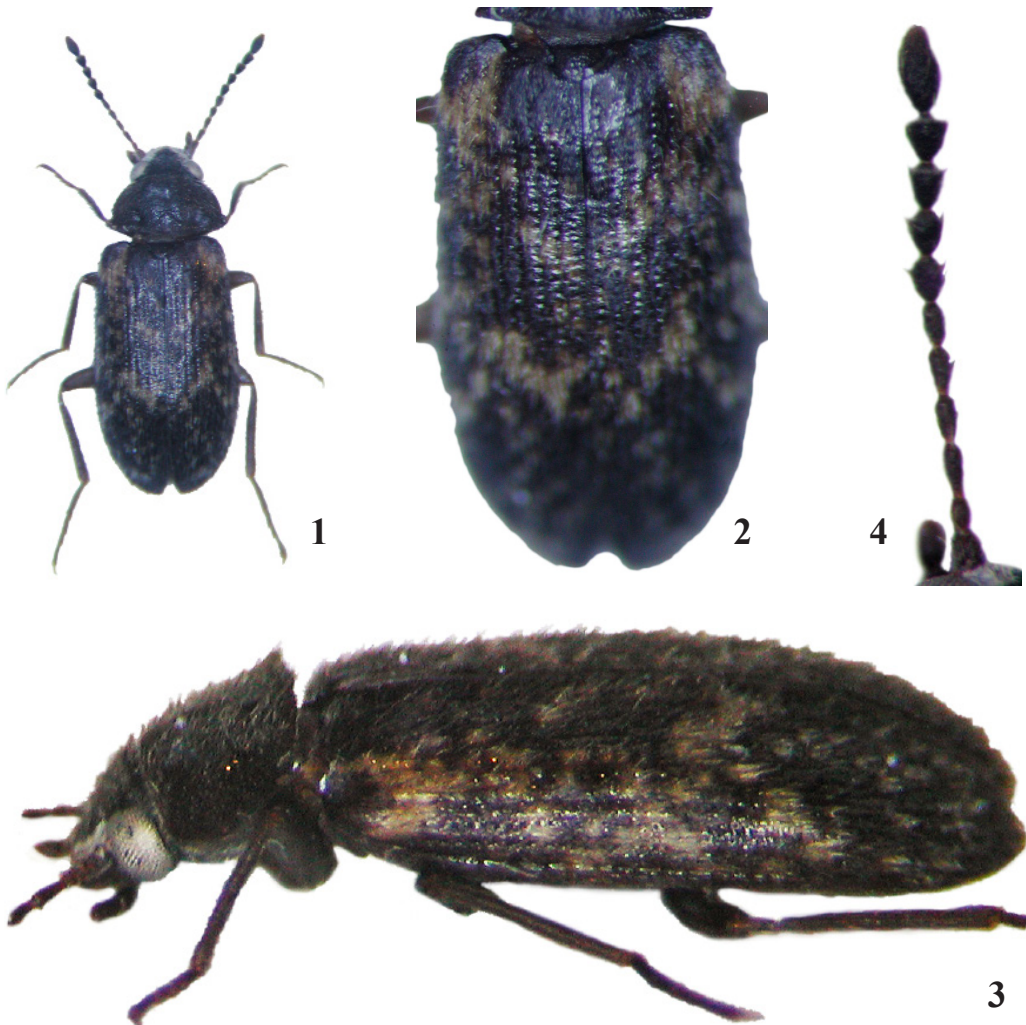
**Material examined:** Nepal, Mechi/Taplejung, 20 km NEE Taplejung, env. Phumphe, 1850 m, 27°24.28'N 87°51.56'E, 24.v.2003, A. Weigel lgt., 2 spec., (NMED, JHAC); Nepal oc., Kathmandu NW, Balaju, Vishnumati River, 1300 m, 17.vi.1999, A. Weigel lgt., 1 spec., (NMED); Nepal, Bagmati, Kathmandu, 10 km SW, W-Dakshinkali. 1500 m, 27°36.25'N 85°15.34'E, 7.v.2013, A. Kopetz lgt., 1 spec., (NMED).

**Distribution.** Species known from India: Uttarpradesh, new to Nepal.

*Mycetophagus (Paramycetophagus) nepalensis*  
**sp. nov.**

(Figs. 1-4)

**Type material.** Holotype (♀): Nepal, Prov. Koshi, Tashigaon, 2100 m, 11.x.2002, J. Weipert lgt., (NMED). Paratypes: 1 (♀): the same data as holotype, (NMED); 1 (♀): Nepal, Koshi, Gufa-Gorza, 2800-2100 m 4.vi.1985, C. Holzschuh lgt., (JHAC); 1 (♀): Nepal, Anapurna Mts., Kali Gandaki valley, SE Lete, Tandung Khola, 2400 m, 3.vi.2004, Schmidt lgt., (NMED).



Figs. 1-4. *Mycetophagus (Paramycetophagus) nepalensis* sp. nov.: 1- habitus, dorsal aspect; 2- elytra, dorsal aspect; 3- habitus lateral aspect; 4- antennae.

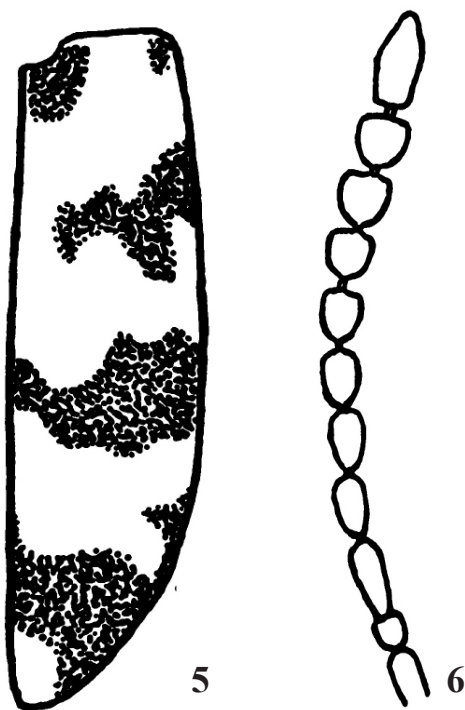
**Description.** Female. Body TL 5.2-6.0 mm, EW 2.1-2.4 mm; elongate-oval, subparallel-sided; weakly convex dorsally, weakly glossy; mostly brown, covered with erect brownish setation and yellowish-white decumbent setation; mouth parts, antennae, and legs brown; elytra brown with yellowish-brown patches. Head with dense and coarse punctures; ocular distance about 2.7 times wider than diameter of eyes; covered by yellowish-white, erect setation; eyes prominent laterally in dorsal view, coarsely faceted and slightly emarginate near antennal insertions; antennae brown, with 11 antennomeres, antennal club with five antennomeres (Fig. 4); palpi brown, apical maxillary palpomere cylindrical. Pronotum convex dorsally, rugose, with large and dense punctures; widest at middle part, gradually narrowed anteriorly and posteriorly; anterior margin slightly arcuate; lateral sides distinctly margined, roundly arcuate; basal margin sinuate, with short and circular grooves at subbasal parts. Scutellum triangular, with short decumbent setation. Elytra with double setation (long erect setation and short decumbent setation), elongate, subparallel-sided, narrowed from apical 1/4 part to apex; black with many small, large and geometric yellowish-brown patches (Figs. 1-3), which are variable among individuals; punctate-striate, striae punctures very deep, large and regular; interstices flat, narrower than striae.

Male. Unknown.

**Differential diagnosis.** The new species belongs to the subgenus *Paramycetophagus* Nikitsky, 2007 according to its double setation on elytra and is similar to *M. (P.) sulcicollis* Champion, 1917 but differs from it by the characters depicted in figures (structure of antennae and elytral colour patterns).

*M. (P.) nepalensis* sp. nov. : elytra black with many small, large and geometric yellowish-brown patches (Figs 1-3).

*M. (P.) sulcicollis* Champion, 1917: elytra black with two large yellowish-brown fasciae and apical spot (Fig. 5).



Figs. 5-6. *Mycetophagus (Paramycetophagus) sulcicollis* Champion, 1917: 5- right elytron; 6- antenna. (according to original drawing in Nikitsky 2007).

**Etymology.** Toponymic, named according to the country Nepal.

**Acknowledgements.** I am very obliged to Matthias Hartmann (NMED) for loaning me the interesting material.

## REFERENCES

- Champion G. C. 1917: Some Coleoptera from Northern India. *The Entomologist's Monthly Magazine*, 53: 52-55.
- Nikitsky N. B. 1988: Novye taksony zhukov-griboedov (Col. Mycetophagidae) i Salpingidae Dalnego Vostoka SSSR. *Zoologicheskii Zhurnal*, 67: 1845-1853. (in Russian)

Nikitsky N. B. 1992: Sem. Mycetophagidae. Pp. 406-423. Sem. Tetratomidae. Pp. 426-435. In: Ler P. A. (ed.): *Opredelitel nasekomykh Dalnego Vostoka SSSR. Tom III. Zhestkokrylye, Hi zhuki. Chast 2* [Keys to the identification of insects of the Soviet Far East. 3 - Coleoptera, or beetles. Part 2.]. St. Petersburg: Nauka. pp. 704.

*Received: 06.05.2019.*

*Accepted: 10.09.2019.*

Nikitsky N. B. 2007: Novyj podrod roda Mycetophagus Fabricius, 1792 (Coleoptera, Mycetophagidae) iz Indii. *Bulleten' Moscovskogo Obschestva Ispytateley Prirody, Otdel Biologicheskij (N. S.)*, 112: 72-73. (in Russian)

Nikitsky N. B. 2008: Family Mycetophagidae Leach, 1815. In: Löbl I. & Semetana A. (eds): *Catalogue of Palaearctic Coleoptera. Volume 5. Tenebrionoidea*. Stenstrup: Apollo Books, pp. 670.

Saitô M. 2013: Two New Species of the Genus Mycetophagus (Coleoptera, Mycetophagidae) from the Yaeyama Islands, Southwest Japan. *Elytra, Tokyo, N. S.*, 3(1): 97-100.